

ITALIAN SOCIETY  
OF ULTRASOUND  
IN MEDICINE  
AND BIOLOGY



EUROSON 2024

# SPONSORSHIP BENEFITS



**NAPLES ITALY NOVEMBER 9|11**

[WWW.EUROSON2024.IT](http://WWW.EUROSON2024.IT)

# VENUE

## EUROSON 2024 will be held in Naples, Italy, an overwhelming city with a unique magic.

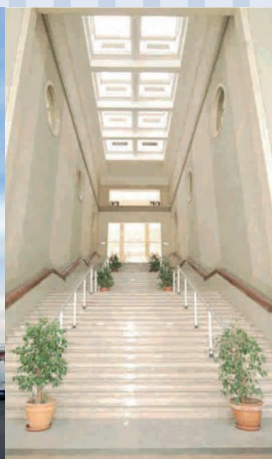
The historic center of Naples has been recognized by UNESCO as a World Heritage Site for its monuments, which bear witness to the succession of Mediterranean and European cultures. From cooking to a thousand amusements and stimuli of all kinds, it will be impossible to get bored.

The congress will be an on-site event welcoming delegates to participate in the venue of Maritime Station Congress Centre. Therefore, we expect up to 1500 participants.

The monumental building of the Naples Maritime Station was built in 1936. Recently its interior spaces were renovated and reorganized, while respecting the original architectural lines. The congress centre is on the side facing onto Piazza Municipio where the sea sinuously laps against its city.

In the middle of the Bay, in the heart of Naples. Close to: city hotels, restaurants, shopping streets, museums, theatres...

- **100 m from Molo Beverello - the terminal for ferryboats and hydrofoils to the islands**
- **3 km from the railway station**
- **4 km from the motorways**
- **7 km from the airport**



# JOIN US AS OUR PARTNER

Companies willing to participate in Congress as Sponsors or Exhibitors, please contact:

## ORGANIZER

**Italian Society of Ultrasound in Medicine and Biology**

## CONTACT PERSON

**Mrs. Emanuela Cascione**

Euroson2024@siumb.it

+39 06 3218257

Please note that the terms and offers are negotiable. All prices are without VAT. Contact us if you are willing to discuss items and formats not listed here.

## SPONSORS' CATEGORIES

### PLATINUM SPONSOR

Total contribution over **35.000 EUR**

### GOLD SPONSOR

Total contribution over **26.000 EUR**

### SILVER SPONSOR

Total contribution over **18.000 EUR**

### BRONZE SPONSOR

Total contribution over **9.500 EUR**

### EXHIBITOR

Total contribution less than **9.000 EUR**



# GENERAL BENEFITS

- **Acknowledgement on official congress App with logo and hyperlink to company's website**
- **Company's logo on Sponsors Recognition Board**
- **Sponsors' Banner with company's logo outside the Plenary Hall and at the registration area**
- **Sponsor's logo included in programs distributed**
- **Complimentary exhibitor registrations**
- **For each exhibition space, 1 congress bag**

To choose the sponsor package that suits your company's needs, you may combine the promotional opportunities (page 17-19) and the exhibition space rental (page 11-16).

The amount of your spenditure will automatically determine your sponsorship level.



# BENEFITS ACCORDING TO LEVEL OF CONTRIBUTION

## PLATINUM

### BADGES

8

### BRANDING/WEB

Logo on a looped PowerPoint slide show in all session rooms prior to the beginning of sessions and during the breaks (including plenary sessions)

400 word company's profile + logo to be included on the official congress website

### FINAL PROGRAMME

Two (2) full page colour advertisement

200 word promotional paragraph including contact details

Logo on the inside back cover

### INSERTS INTO CONGRESS BAG

Two (2) maximum 4 pages /A4 inserts or promotional products in congress bags

### PRIORITIES

First in:

- Booth location
- Timeslot and room for lunch satellite symposium

## GOLD

### BADGES

5

### BRANDING/WEB

Logo on a looped PowerPoint slide show in all session rooms prior to the beginning of sessions and during the breaks (including plenary sessions)

300 word company's profile + logo to be included on the official congress website

### FINAL PROGRAMME

One (1) full page colour advertisement

100 word promotional paragraph including contact details

Logo on the inside back cover

### INSERTS INTO CONGRESS BAG

One (1) maximum 4 pages / A4 inserts or promotional products in congress bags

### PRIORITIES

Second in:

- Booth location
- Timeslot and room for lunch satellite symposium



# BENEFITS ACCORDING TO LEVEL OF CONTRIBUTION

## SILVER

### BADGES

3

### BRANDING/WEB

Logo on a looped PowerPoint slide show in all session rooms prior to the beginning of sessions and during the breaks (except for plenary sessions)

200 word company's profile + logo to be included on the official congress website

### FINAL PROGRAMME

Half page colour advertisement

50 word promotional paragraph including contact details

Logo on the inside back cover

### INSERTS INTO CONGRESS BAG

None

### PRIORITIES

Third in:

- Booth location
- Timeslot and room for lunch satellite symposium

## BRONZE

### BADGES

2

### BRANDING/WEB

Logo on a looped PowerPoint slide show in all session rooms prior to the beginning of sessions and during the breaks (except for plenary sessions)

100 word company's profile + logo to be included on the official congress website

### FINAL PROGRAMME

80 word promotional paragraph including contact details

Logo on the inside back cover

### INSERTS INTO CONGRESS BAG

None

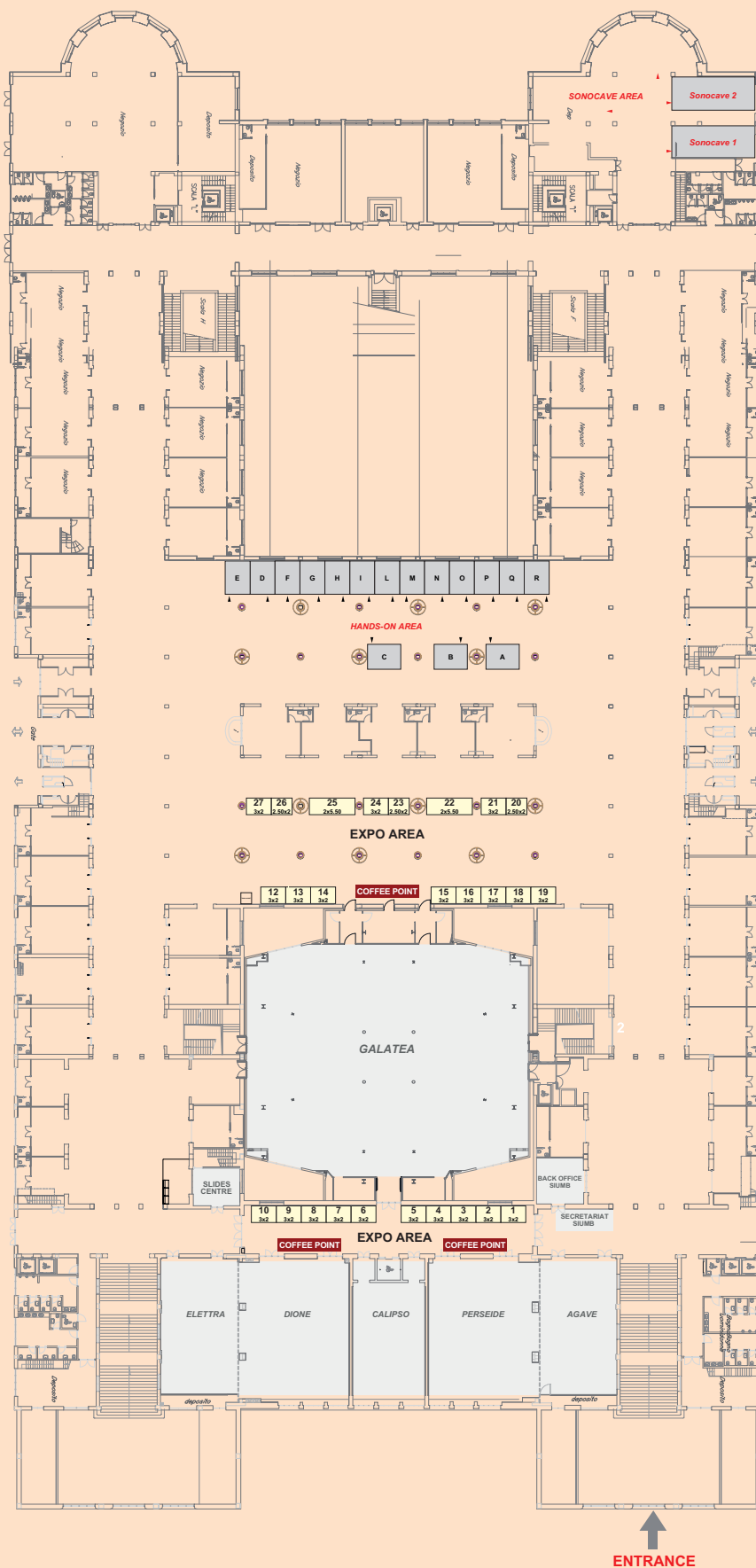
### PRIORITIES

None



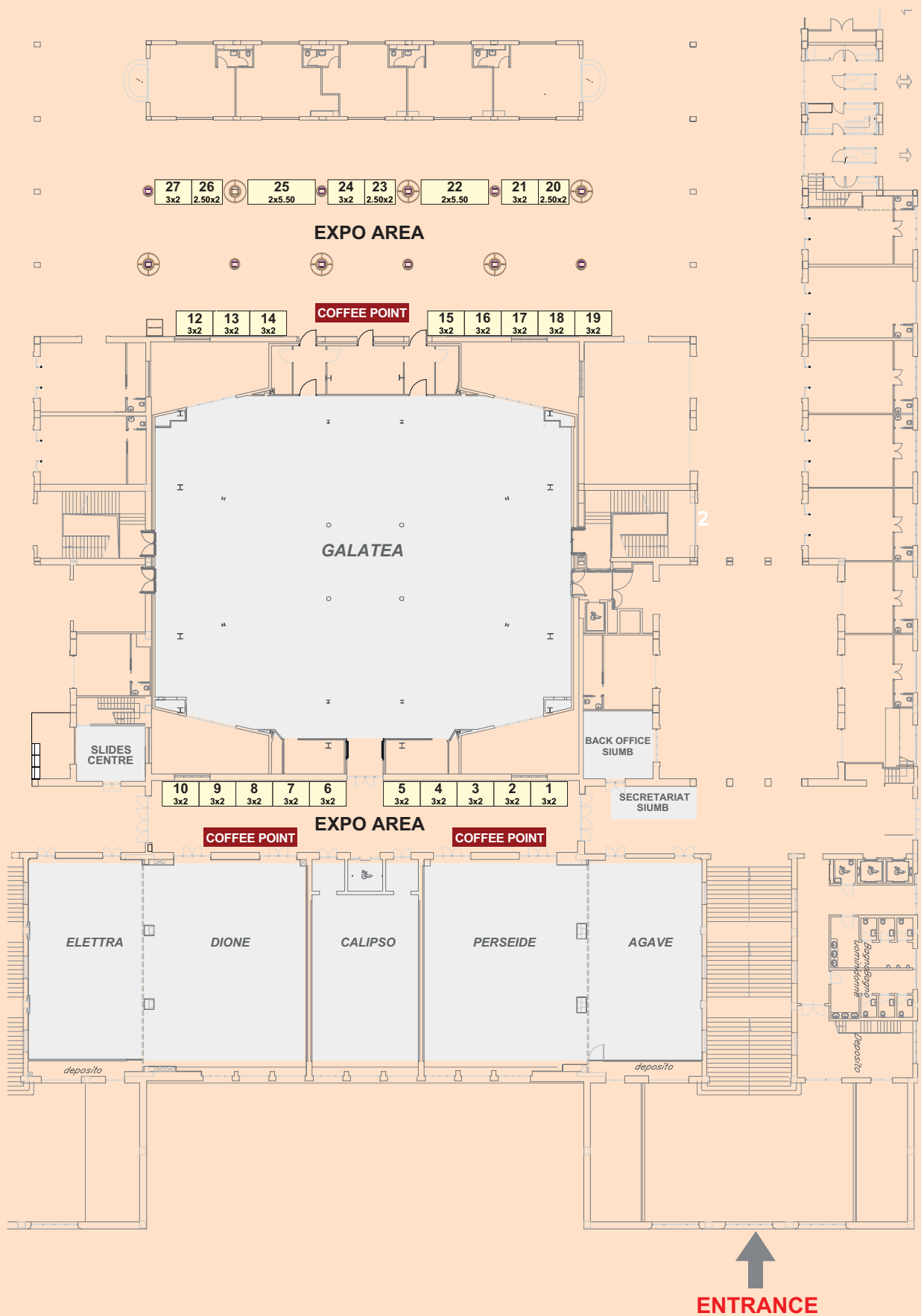
# GENERAL OVERVIEW OF EXHIBITION AREA

## First Floor



# DETAILED EXHIBITION AREA AND MAIN CONGRESS HALLS

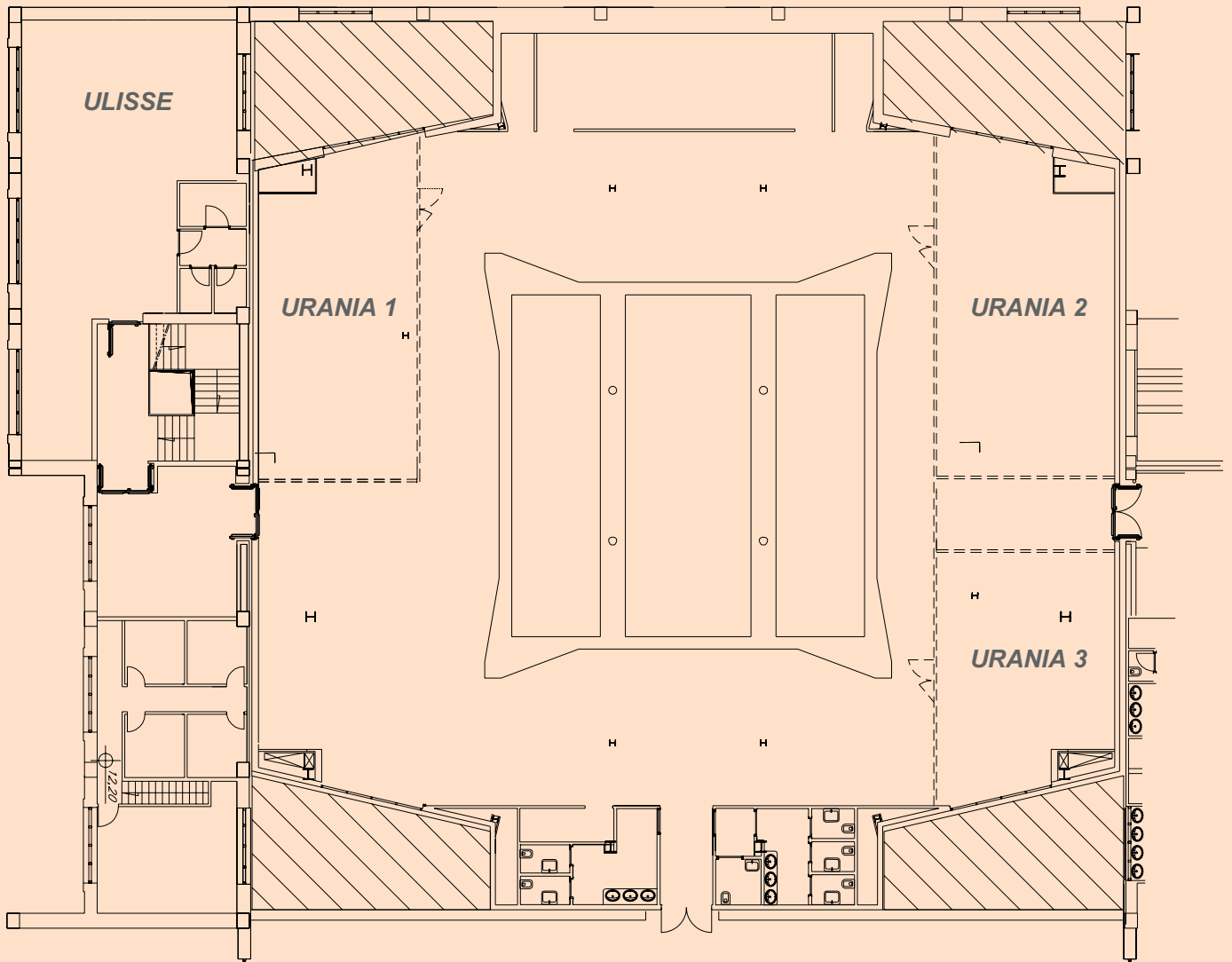
## First Floor



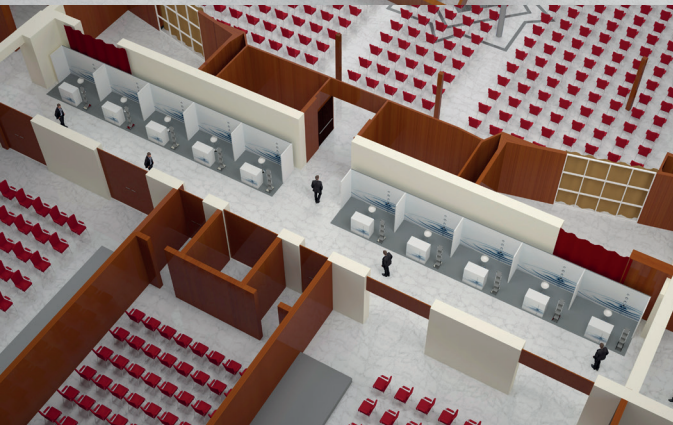
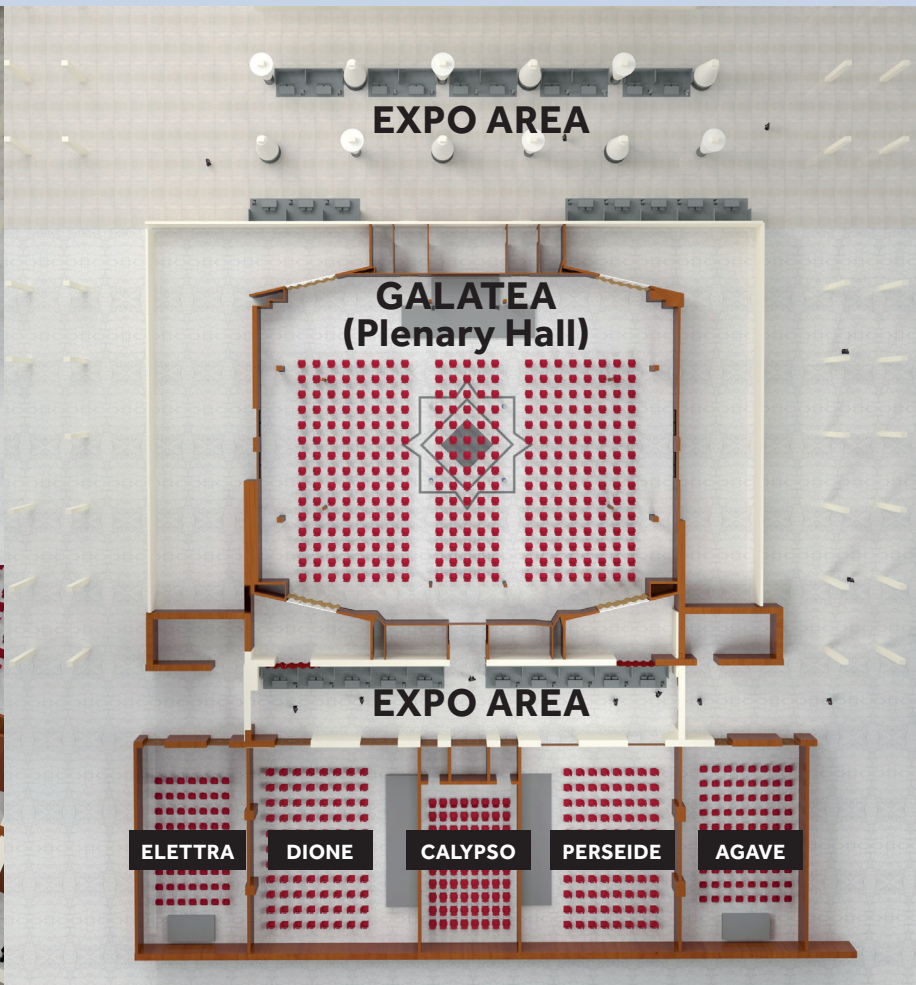
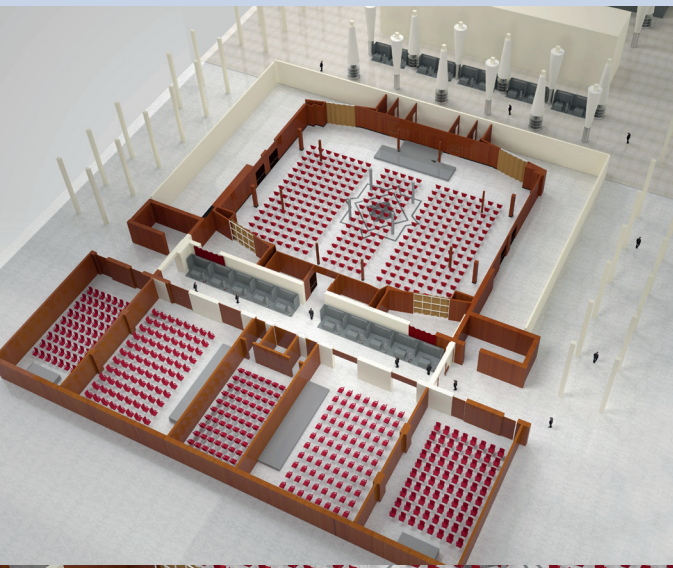


# PARALLEL CONGRESS ROOMS

## Second Floor



# FIRST FLOOR RENDERING





# EXHIBITION

In Maritime Station Congress Center, customized shell scheme stands by Exhibitors are not allowed. Spaces of 5 sqm- 6 sqm, 11 sqm are available, totally equipped by the Organizer in the following versions and costs:

## BASIC VERSION

### ST3-14-05

Shell scheme booth (panels h.200 cm) | 5 sqm

€ 9.900,00

#### Technical description

- Customized Backwall, L250 h 200 cm, white colour including 1 graphics (company logo)
- 2 Side panels L 100 h. 200 cm, white colour
- Floor covering carpet, grey colour, L250 x 200
- N.1 table covered with grey fabrics
- N.2 chairs, black colour
- N.1 flyer holder
- N.1 waste paper bin

#### Electric system

- N.1 power supply with up to 1,5 kw\*
  - N.1 LED spotlight
  - N.1 multiple socket 500 w
- \*additional power supply is charged of 100 EUR/kw*

#### Additional services included

**(for hands-on sessions of basic and advanced courses- SonoCaves excluded)**

- N.1 Ultrasound stations (devices at Company's care)
- N.1 model



# EXHIBITION

In Maritime Station Congress Center, customized shell scheme stands by Exhibitors are not allowed. Spaces of 5 sqm- 6 sqm, 11 sqm are available, totally equipped by the Organizer in the following versions and costs:

## BASIC VERSION

### ST3-14-06

Shell scheme booth (panels h.200 cm) | 6 sqm

€ 10.900,00

#### Technical description

- Customized Backwall, L300 h 200 cm, white colour including 1 graphics (company logo)
- 2 Side panels L 100 h. 200 cm, white colour
- Floor covering carpet, grey colour, L300 x 200
- N.1 table covered with grey fabrics
- N.2 chairs, black colour
- N.1 flyer holder
- N.1 waste paper bin

#### Electric system

- N.1 power supply with up to 1,5 kw\*
  - N.1 LED spotlight
  - N.1 multiple socket 500 w
- \*additional power supply is charged of 100 EUR/kw*

#### Additional services included

**(for hands-on sessions of basic and advanced courses- SonoCaves excluded)**

- N.1 Ultrasound stations (devices at Company's care)
- N.1 model



# EXHIBITION

In Maritime Station Congress Center, customized shell scheme stands by Exhibitors are not allowed. Spaces of 5 sqm- 6 sqm, 11 sqm are available, totally equipped by the Organizer in the following versions and costs:

## BASIC VERSION

### ST3-14-011

Shell scheme booth (panels h.200 cm) | 11 sqm

€ 17.900,00

#### Technical description

- Customized Backwall, L550 h 200 cm, white colour including 1 graphics (company logo)
- 2 Side panels L 100 h. 200 cm, white colour
- Floor covering carpet, grey colour, L550x 200
- N.1 table covered with grey fabrics
- N.2 chairs, black colour
- N.1 flyer holder
- N.1 waste paper bin

#### Electric system

- N.1 power supply with up to 1,5 kw\*
  - N.1 LED spotlight
  - N.1 multiple socket 500 w
- \*additional power supply is charged of 100 EUR/kw*

#### Additional services included

**(for hands-on sessions of basic and advanced courses- SonoCaves excluded)**

- N.1 Ultrasound stations (devices at Company's care)
- N.1 model



# EXHIBITION

In Maritime Station Congress Center, customized shell scheme stands by Exhibitors are not allowed. Spaces of 5 sqm- 6 sqm, 11 sqm are available, totally equipped by the Organizer in the following versions and costs:

## LUXURY VERSION

### ST3-15-05

Shell scheme booth (panels h.200 cm) | 5 sqm

€ 10.500,00

#### Technical description

- Customized Backwall, L250 h 200 cm, white colour including 1 graphics (company logo)
- 2 Side panels L 100 h. 200 cm, white colour
- Floor covering carpet, grey colour, L250 x 200
- N.1 desk DK-04P 100x50 cm h.100, white colour, with company logo
- N.2 swivel stools, white colour
- N.1 flyer holder
- N.1 waste paper bin

#### Electric system

- N.1 power supply with up to 1,5 kw\*
  - N.1 LED spotlight
  - N.1 multiple socket 500 w
- \*additional power supply is charged of 100 EUR/kw*

#### Additional services included

**(for hands-on sessions of basic and advanced courses- SonoCaves excluded)**

- N.1 Ultrasound stations (devices at Company's care)
- N.1 model



# EXHIBITION

In Maritime Station Congress Center, customized shell scheme stands by Exhibitors are not allowed. Spaces of 5 sqm- 6 sqm, 11 sqm are available, totally equipped by the Organizer in the following versions and costs:

## LUXURY VERSION

### ST3-15-06

Shell scheme booth (panels h.200 cm) | 6 sqm

€ 11.500,00

#### Technical description

- Customized Backwall, L300 h 200 cm, white colour including 1 graphics (company logo)
- 2 Side panels L 100 h. 200 cm, white colour
- Floor covering carpet, grey colour, L300 x 200
- N.1 desk DK-04P 100x50 cm h.100, white colour, with company logo
- N.2 swivel stools, white colour
- N.1 flyer holder
- N.1 waste paper bin

#### Electric system

- N.1 power supply with up to 1,5 kw\*
  - N.1 LED spotlight
  - N.1 multiple socket 500 w
- \*additional power supply is charged of 100 EUR/kw*

#### Additional services included

**(for hands-on sessions of basic and advanced courses- SonoCaves excluded)**

- N.1 Ultrasound stations (devices at Company's care)
- N.1 model



# EXHIBITION

In Maritime Station Congress Center, customized shell scheme stands by Exhibitors are not allowed. Spaces of 5 sqm- 6 sqm, 11 sqm are available, totally equipped by the Organizer in the following versions and costs:

## LUXURY VERSION

### ST3-15-011

Shell scheme booth (panels h.200 cm) | 11 sqm

€ 19.500,00

#### Technical description

- Customized Backwall, L550 h 200 cm, white colour including 1 graphics (company logo)
- 2 Side panels L 100 h. 200 cm, white colour
- Floor covering carpet, grey colour, L550 x 200
- N.1 desk DK-04P 100x50 cm h.100, white colour, with company logo
- N.2 swivel stools, white colour
- N.1 flyer holder
- N.1 waste paper bin

#### Electric system

- N.1 power supply with up to 1,5 kw\* • N.1 LED spotlight
  - N.1 multiple socket 500 w
- \*additional power supply is charged of 100 EUR/kw*

#### Additional services included

**(for hands-on sessions of basic and advanced courses- SonoCaves excluded)**

- N.1 Ultrasound stations (devices at Company's care)
- N.1 model

**Any additional equipment as other furniture, internet, AV, decorations etc. can be ordered extra. One congress bag + one exhibitor badge will be provided per each exhibition space. Additional exhibitor badges will be granted by the Organizer according to the level of sponsor contribution (see pag.5-6).**

**Additional Exhibitor Registration 120 EUR, including VAT.**





# CATALOGUE OF PROMOTIONAL OPPORTUNITIES

ALL PRICES ARE VAT EXCLUDED

## SCIENTIFIC PRESENTATIONS

### SPONSOR-SUPPORTED SCIENTIFIC SESSION (Lunch Symposium)

A company can organize a supported session of 60 minutes during lunch breaks, (*choosing its own speakers + topic and providing to their hospitality expenses*). The Organizer will provide the room and the AV equipment. The company can choose any of the congress rooms available (except for the Plenary Hall that can be dealt separately in case of interest). Rooms and timeslots will be distributed based on priorities and on first come, first served basis.

**Approx. cost based on room capacity:**

**starting from € 3,000 up to € 5,000 /per day/per room (excluding Plenary Hall)**

### E-POSTER SESSION

Company name and/or logo displayed into the monitors of the E-Poster area.

Company logo in the Final Programme brochure in the part with e-poster session details.

This opportunity can be multi-sponsored.

**1.500 EUR/each monitor**

### HANDS-ON ROOMS

These pre-fitted rooms (10/12 pax) will host training sessions on Company's ultrasound devices according to several time slots. On demand, they can be also used as Company's Hospitality Room only in the hours not dedicated to CME activities. Opportunity to brand with a banner outside the room during non-CME activity.

**2.500 EUR/each room**

### SONOCAVES (Abside Hall)

This type of rooms (20/25 pax) will host demo sessions with an Expert on a specific topic, according to scheduled time slots. AV equipment included. Opportunity to brand with Company's ultrasound device and banner outside the hall.

**2.800 EUR/each session**



## SOCIAL EVENTS' SPONSORSHIP

### WELCOME COCKTAIL -OPENING CEREMONY

**Saturday 9 November (300 pax)**

**6.000 EUR**

This event will be organized at Maritime Station Congress Center (Abside Hall). It will be sponsored in collaboration with SIUMB. The price indicated refers to Company's partial contribution.

Company's logo will be displayed on Hall screen during the event. Opportunity to place roll-up banners at the entrance and inside the Hall.

This opportunity is exclusive and will be provided to one company only.

### GALA DINNER

**Sunday 10 november (200 pax)**

**8.900 EUR**

This social event will be organized on Sunday evening, at the Royal Continental Hotel, one of the most beautiful locations overlooking the Gulf of Naples.

It will be sponsored in collaboration with SIUMB. The price indicated refers to Company's partial contribution. Company's logo will be set on invitation cards. Opportunity to place roll-up banners at the main entrance and inside location.

This opportunity is exclusive and will be provided to one company only.

## CONGRESS MATERIALS

### BRANDED CONGRESS BAGS

**5.000,00 EUR – if Company provides bags**

**8.500,00 EUR – if Organiser provides bags**

Company name and/or logo, together with a congress logo to be printed on each congress bag. This opportunity is exclusive and will be provided to one company only.

**Template available on request.**

### NAME BADGES & BADGE LANYARDS

**5.000 EUR**

Company logo to be printed on the front page of each name badge and on each badge lanyard.

This opportunity is exclusive and will be provided to one company only. **Company provides lanyards for all participants.**

### PENS & NOTEPADS

**3.000 EUR**

Company name and/or logo, together with a congress logo to be printed on pens to be distributed to all congress participants. This opportunity is exclusive and will be provided to one company only. **Company provides pens & notepads.**

### MOUSEPADS

**3.500 EUR**

Company name and/or logo, together with a congress logo to be printed on mousepads to be distributed to all congress participants as a gadget. This opportunity is exclusive and will be provided to one company only. **Template available on request.**



**SIGNAGE****5.000 EUR**

Company logo to be displayed on all direction signs and session rooms entry banners. This opportunity can be booked for each session room and so it is not completely exclusive. Rooms will be distributed based on priorities and on first come, first served basis.

**STAFF T-SHIRTS****2.400 EUR**

Company logo to be printed on all staff T-shirts. This opportunity is exclusive and will be provided to one company only.

**ADVERTISING****FINAL PROGRAMME BROCHURE****Full page colour advertisement****2.500 EUR****Half page colour advertisement****1.500 EUR****Insert in Congress Bags****1.200 EUR**

One (1) insert or promotional leaflet of maximum 4 pages and maximum A4 size to be inserted in congress bags for all delegates.

**COMPANY NEWSLETTERS**

Promotional campaigns through emailing to all attendees and 5,000 SIUMB members.

**Graphic provided by the Company****1.800 EUR**